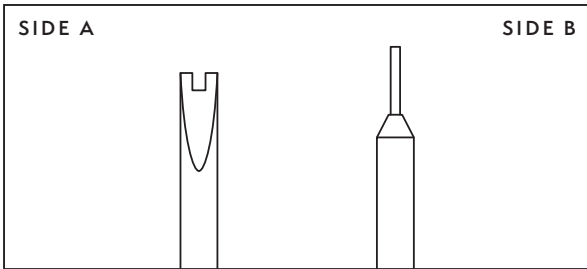
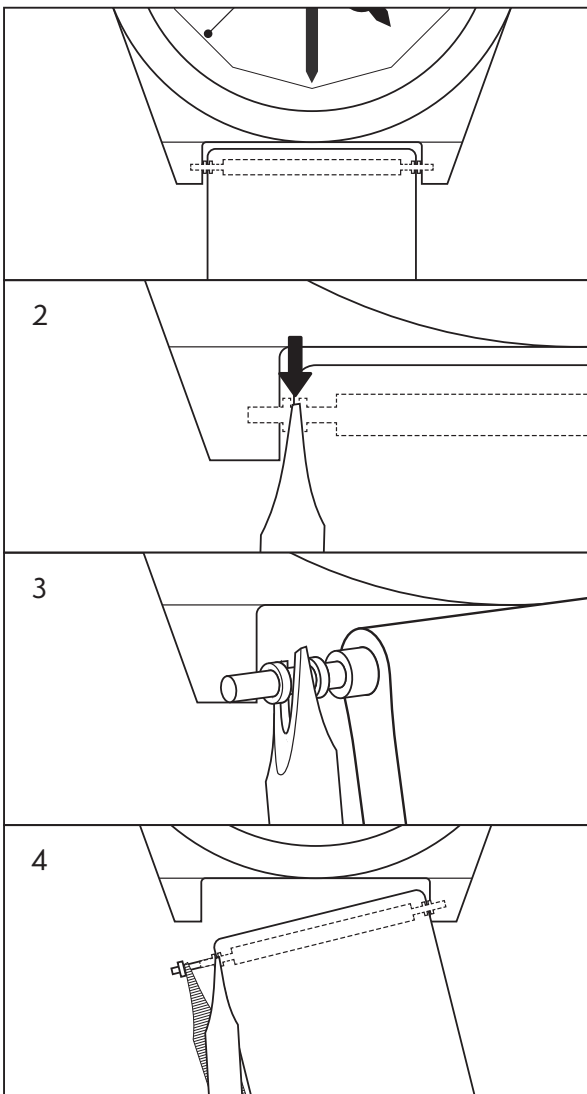




STRAP TOOL

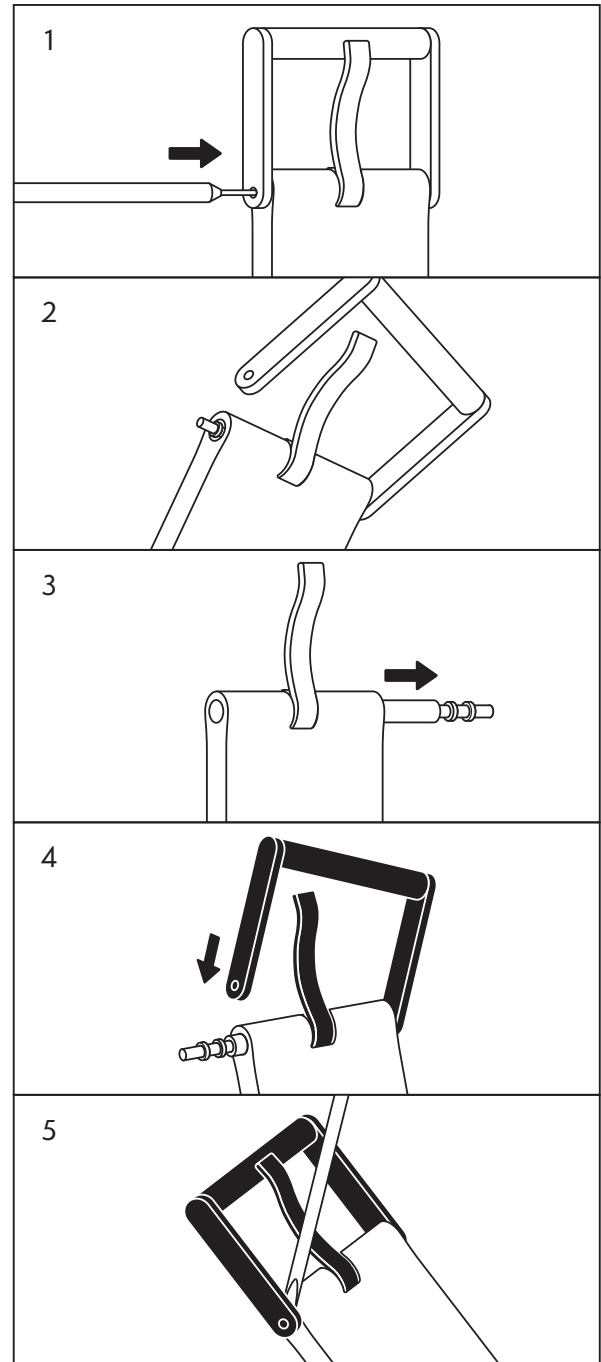


CHANGING STRAP



- 1 Locate the spring inside the watch band.
- 2 Insert side 'A' of the tool between the ear of the watch and the strap, pressing down on the spring.
- 3 Lever up to detach the spring bar.
- 4 Insert the spring bar inside the new strap and reverse the steps above.

CHANGING BUCKLE



- 1 Insert side 'B' of the tool supplied into the pinhole located on the side of buckle.
- 2 Once spring bar releases from buckle pinhole, pull buckle away from the spring bar.
- 3 Pull out the spring bar and tongue from strap. Repeat the process in reverse to install the new tongue.
- 4 Insert one end of the spring bar into the new buckle pinhole.
- 5 Use side 'A' to compress the spring bar so that it slide underneath the buckle and back into pinhole.